

## CAMP COST

The camp costs are per family and include all three days of camp.

One Participant: \$150

Two Participants: \$275

Three Participants: \$400

## CAMP TIMES

Adults/Adolescents...9:00am - 3:00pm

Children...10:00am - 3:00pm

## CAMP ENROLLMENT

To enroll, please download the registration form at our website or contact

Cindy Edgerton at:

(517) 353-6426, (517) 543-1981 or

edgerto3@msu.edu

www.cms.msu.edu

Registrations will be accepted until camp reaches capacity.



## CAMP STAFF

### Jeff Chiambretti

♪ Nursing Student, University of Michigan

### Laura Duda, MT-BC

♪ Music Therapist, Children's Hospital of Michigan

### Erin Dunbar, MT-BC

♪ Music Therapist, Twenty Nine Palms, CA

### Cindy Edgerton, MM, MT-BC

♪ Camp Director

♪ Co-Director of MSU CMS Music Therapy Clinical Services

### Jenn Gietzen, MT-BC

♪ Music Therapist, school contractual and private work, southwestern Michigan

### Jaime Hill, MT-BC

♪ Music Therapist, owner of Harmony Garden Music Therapy Services, Jackson, Michigan

### Jackie Kuhl, Registered Nurse

♪ 20+ years experience in home health care

### Julia Purcell, MT-BC

♪ Co-Director of Music Therapy, Hazelwood Center, Louisville, Kentucky

### Åshild Rødsætre-Thompson, MM, MT-BC

♪ Music Therapist, MSU CMS Music Therapy Clinical Services

### Roger Smeltekop, MM, MT-BC

♪ Co-Director of MSU CMS Music Therapy Clinical Services

♪ Associate Professor of Music Therapy

### Denise Travis, MM, MT-BC

♪ Music Therapist, MSU CMS Music Therapy Clinical Services

### Judy and Dick Winter

♪ Camp Co-Chairs

♪ Proud Parents of Eric 'RicStar' Winter



c/o Cindy Edgerton

841 Timberlane Street, Suite B

East Lansing, MI 48823-2942

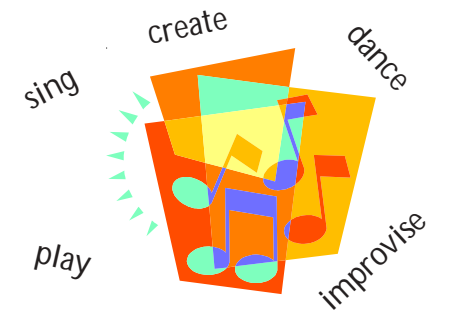
★ Please join us for the 6<sup>th</sup> Annual ★

## Eric 'RicStar' Winter Music Therapy Camp



June 12th-14th, 2008

MSU Community Music School  
Timberlane Campus  
East Lansing





## Eric 'RicStar' Winter (1990-2003)



Eric began participating in music beginning at the age of three. Most of that time he spent jamming with the incredible Cindy Lu Edgerton! For the next nine years, music was an extremely important part of his life. Eric had an insatiable appetite for music and music-making. He always found a way to make sure everyone knew just how important music was to him. During his final months of life, Eric was able to show some of his incredible musical talents as a lyricist, composer and singer. Eric composed melodies and wrote songs. He always made sure his music therapists were working their hardest and would never compromise his ideas, even when it took several attempts to get it right!

Eric also wrote many songs that had lyrics. In these songs, Eric's wonderful sense of humor shines through. It was from Eric's great love for and enjoyment of music, as well as the incredible dedication of his parents, Dick and Judy, that this music therapy camp came to be.

This camp is held in honor of the life of Eric 'RicStar' Winter; son, brother, grandson, composer, teacher, friend...an inspiration to us all.

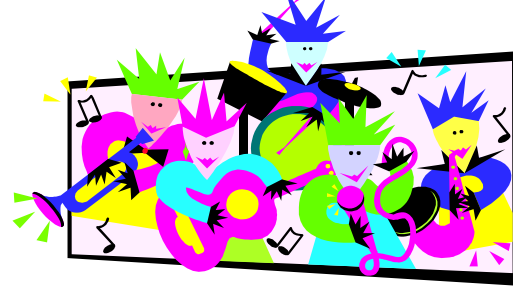
The purpose of this camp is to provide opportunities for musical expression, enjoyment, and interaction for *all* people with special needs and their siblings. This camp is also dedicated to breaking down barriers. The BuddyUp program pairs campers with their peers without disabilities. Buddies and campers develop friendships and an understanding of one another's lives.



## GROUPS



Participants will be divided into three groups: adult, adolescent and child. Opportunities for individual activities and a "down-time" room will be provided for participants needing breaks throughout their days. Camp sessions will include activities such as:



- ♪ **Song Writing**  
Create song lyrics and compose melodies
- ♪ **Rock 'N Roll Combo**  
Play instruments such as electric guitar, electric bass, drum set, and sing classic rock 'n roll favorites
- ♪ **The Silly Sing-Along**  
Write and sing music madlibs and other silly songs
- ♪ **Xylophones & Tone Bars**  
Play a variety of mallet instruments
- ♪ **Party Dancing**  
Learn the "Chicken Dance", "Hokey Pokey" and other structured dances
- ♪ **Bean Bag and Parachute Fun**  
Move, shake, balance, do the wave....
- ♪ **Handchimes & Boomwhackers**  
Improvise and learn songs using handchimes and boomwhackers



- ♪ **Movin' to the Beat**  
Dance and take part in creative movement activities
- ♪ **Percussion Improvisation**  
Play a variety of percussion instruments and interact through music
- ♪ **Music Listening-Guest Performers**  
Listen to a variety of live instrumental performances
- ♪ **Sound Shapes**  
Play different shaped hand drums
- ♪ **Song Stories**  
Create sound effects to stories
- ♪ **Vocal Group**  
Sing together.....requests will be taken!



*Certified therapy dogs* attend camp. They help campers improve social skills and reduce stress.

At the camp's conclusion, campers take center stage for the *Be A Star Showcase*. Campers show what they have learned....what they CAN do! Everyone is invited!

## SAMPLE SCHEDULE



### ADULT GROUP

9:00 am - 9:45am Welcome Sing-Along  
 9:55am-10:40am Percussion Improvisation  
 10:50am-11:35am Song Writing  
 11:45am-12:30pm ♪ LUNCH ♪  
 12:40pm-1:25pm Xylophones  
 1:35pm-2:20pm Handchimes  
 2:30 pm-3:00pm Rap-up Celebration

### ADOLESCENT GROUP

9:00 am - 9:45am Sing-n-Play Jamboree  
 9:55am-10:40am Rock-n-Roll Combo  
 10:50am-11:35am Handchimes  
 11:45am-12:30pm ♪ LUNCH ♪  
 12:40pm-1:25pm Song Writing  
 1:35pm-2:20pm Percussion Improvisation  
 2:30 pm-3:00pm Rap-up Celebration

### CHILD GROUP

10:00am-10:30am Silly Sing-Along  
 10:30am-11:00am Boomwhackers  
 11:00am-11:30am Snack  
 11:30am-12:00pm Xylophones  
 12:00am-12:30pm Sound Shapes  
 12:30pm-1:00pm ♪ LUNCH ♪  
 1:00pm-1:30pm Song Stories  
 1:30pm-2:00pm Music Listening  
 2:00pm-2:30pm Parachute Fun  
 2:30 pm-3:00pm Rap-up Celebration

♪ Please bring a bag lunch ♪